



CROWS LANDING

INDUSTRIAL BUSINESS
PARK & AIRFIELD

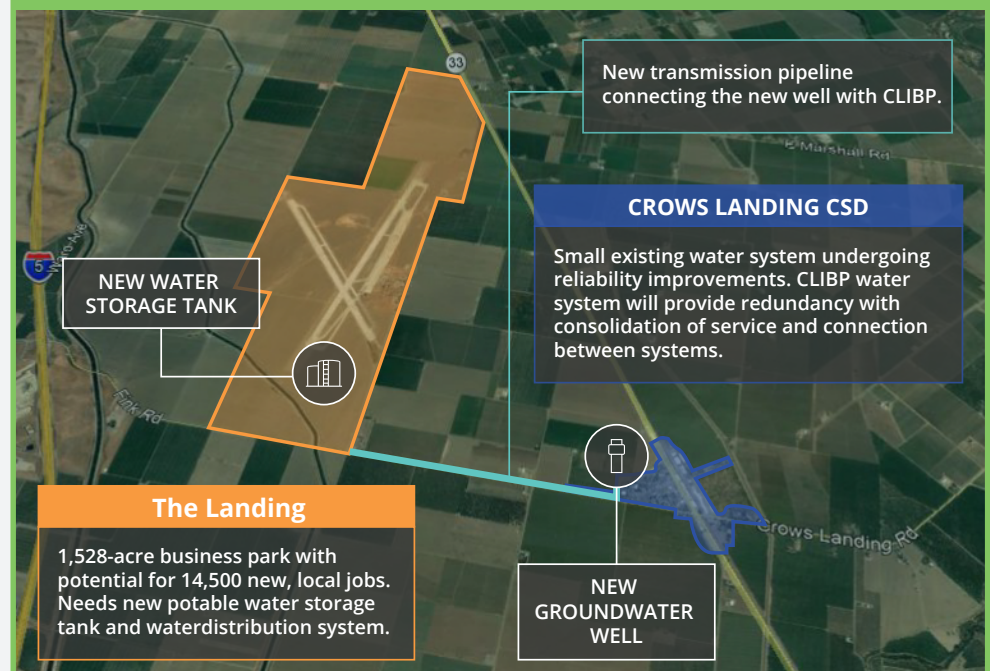
Creating jobs where people live.



Dedicated to bringing new jobs and business to Stanislaus County.

Stanislaus County invests in our community – and Crows Landing is an essential part of that investment moving forward. Phase 1A will realize as many as 1,300 jobs, and includes 52 acres for logistics, 41 acres for manufacturing/light industry, 10 acres for business park, and significant investment in initial infrastructure.

A new groundwater well will be built on County acquired land adjacent to the Crows Landing CSD. Water will be conveyed to CLIBP (The Landing), and will integrate into one overall system.



Important Milestones Ahead for Our Economic Future

- The Crows Landing CSD is a local water service provider currently planning for future system improvements providing increased reliability and the ability to expand when needed.
- The County is establishing a Community Service Area (CSA) for the CLIBP to own and operate the water system serving the business park until Crows Landing CSD completes their reliability improvements and consolidation of service can occur between the CSA and CSD.
- Both preceding steps are fully supported by the County, Crows Landing CSD, Stanislaus County LAFCO, and CALED and are critically important to the public/private partnership focused on achieving jobs, wages and economic improvement.

Unprecedented public investment in future business opportunities.

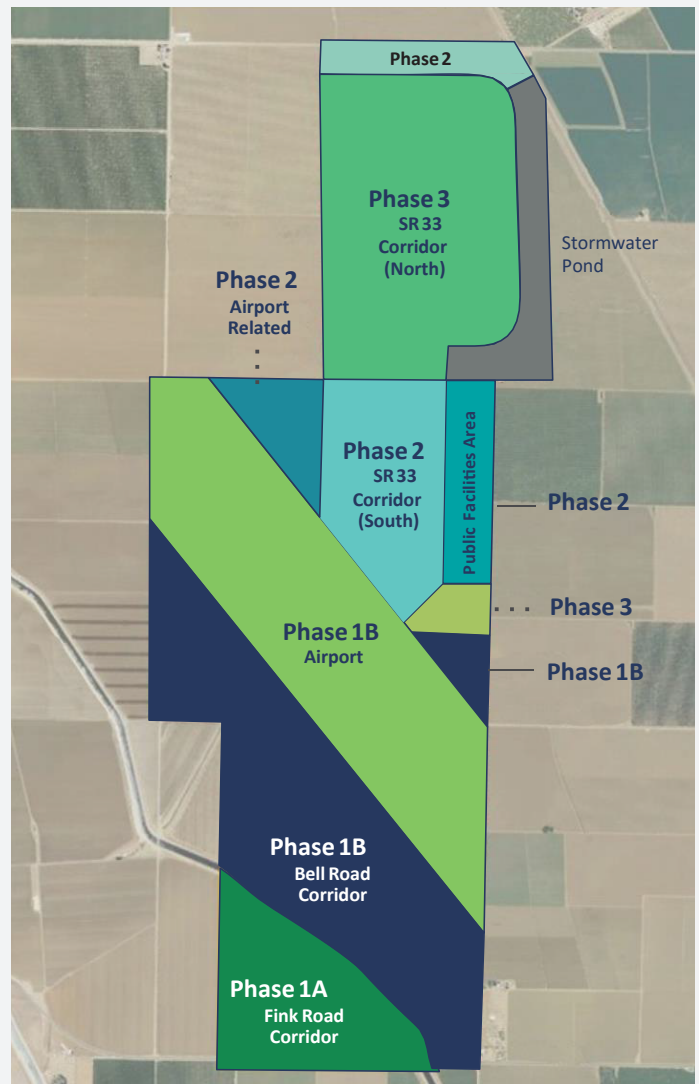
Stanislaus County has been committed to the beneficial reuse of Crows Landing for more than 20 years.

- Stanislaus County worked with lawmakers in Sacramento to transfer all rights, title, and interests of the United States in Crows Landing to the County following environmental cleanup and remediation. (1999-2020)
- The County prepared the Specific Plan to streamline future building applications and review processes, completed and certified the Environmental Impact Report, and is investing in initial infrastructure development.
- The County is investing over \$30 million to develop initial infrastructure such as internal roadways, water and wastewater systems, stormwater management, and more, to prepare for future businesses and users.
- Crows Landing Industrial Business Park is partnership driven with regional entities in full support of its progress and system improvements to achieve goals.

Our vision is to transform the former Crows Landing Naval Air Facility into a vibrant, regional employment and business center that capitalizes on infrastructure and location to provide sustainable-wage jobs in Stanislaus County.

We are Stanislaus County.

An affordable and strategic business location with competitive wages, vibrant and diverse communities, competitive land costs, and an available workforce. We are committed to fostering strong public/private partnerships through initial public investment in environmental permitting, planning and infrastructure development.



Project Benefits

To Stanislaus County

- At full buildout, CLIBP (The Landing) has the potential to produce over 15,000 direct jobs and \$4.7 billion in output.
- When including indirect and induced effects, the employment potential is over 35,000 jobs and \$8.5 billion in output.
- Residents will have more options to work within the County, reducing commute times and vehicle miles, and reducing unemployment rates.
- Reduced miles and reduced travel lead to significant air quality benefits.
- Reduced unemployment.

