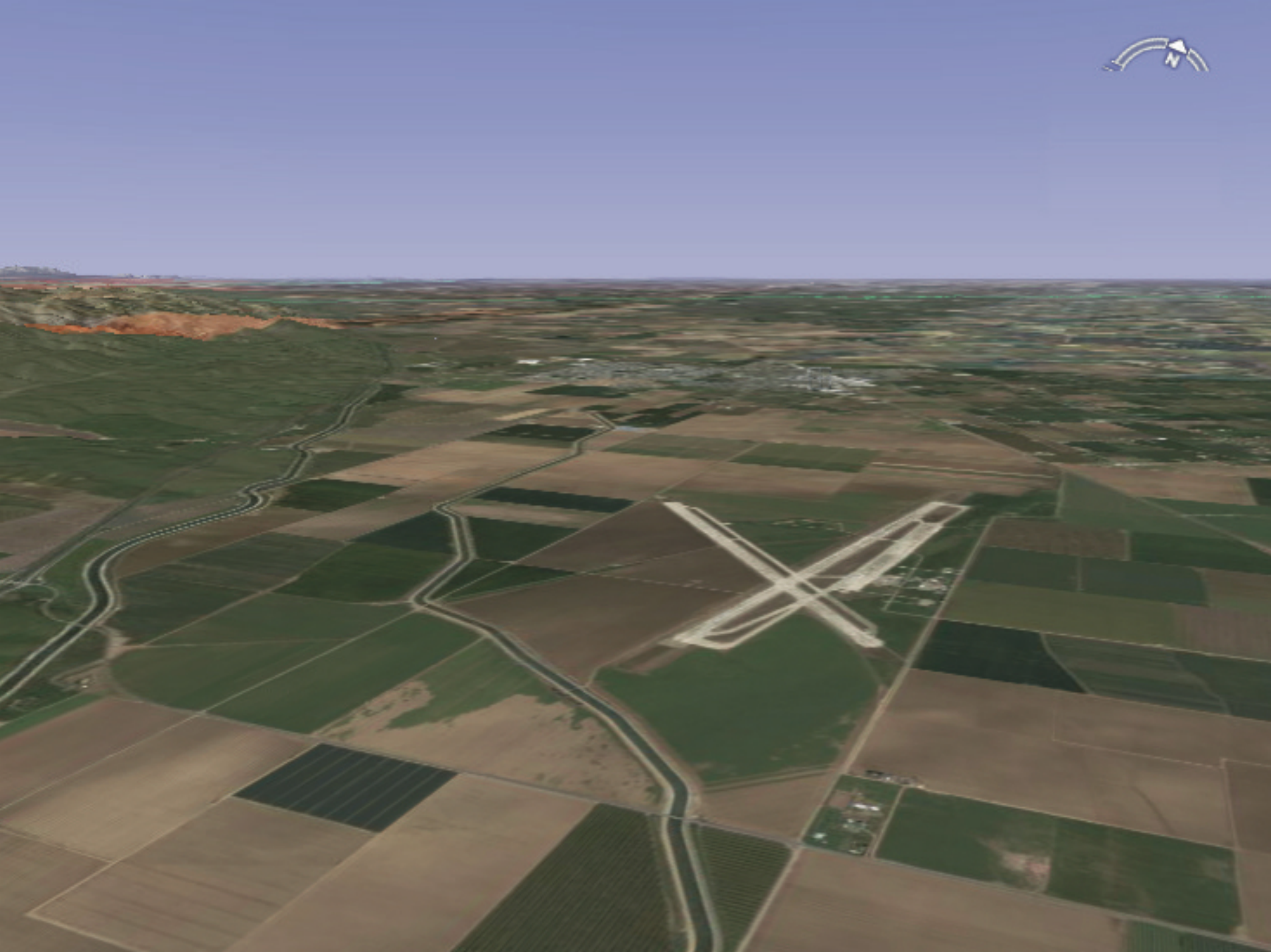




CROWS LANDING Job Center and Air Facility


Presentation to Modesto Chamber of Commerce
May 15, 2008





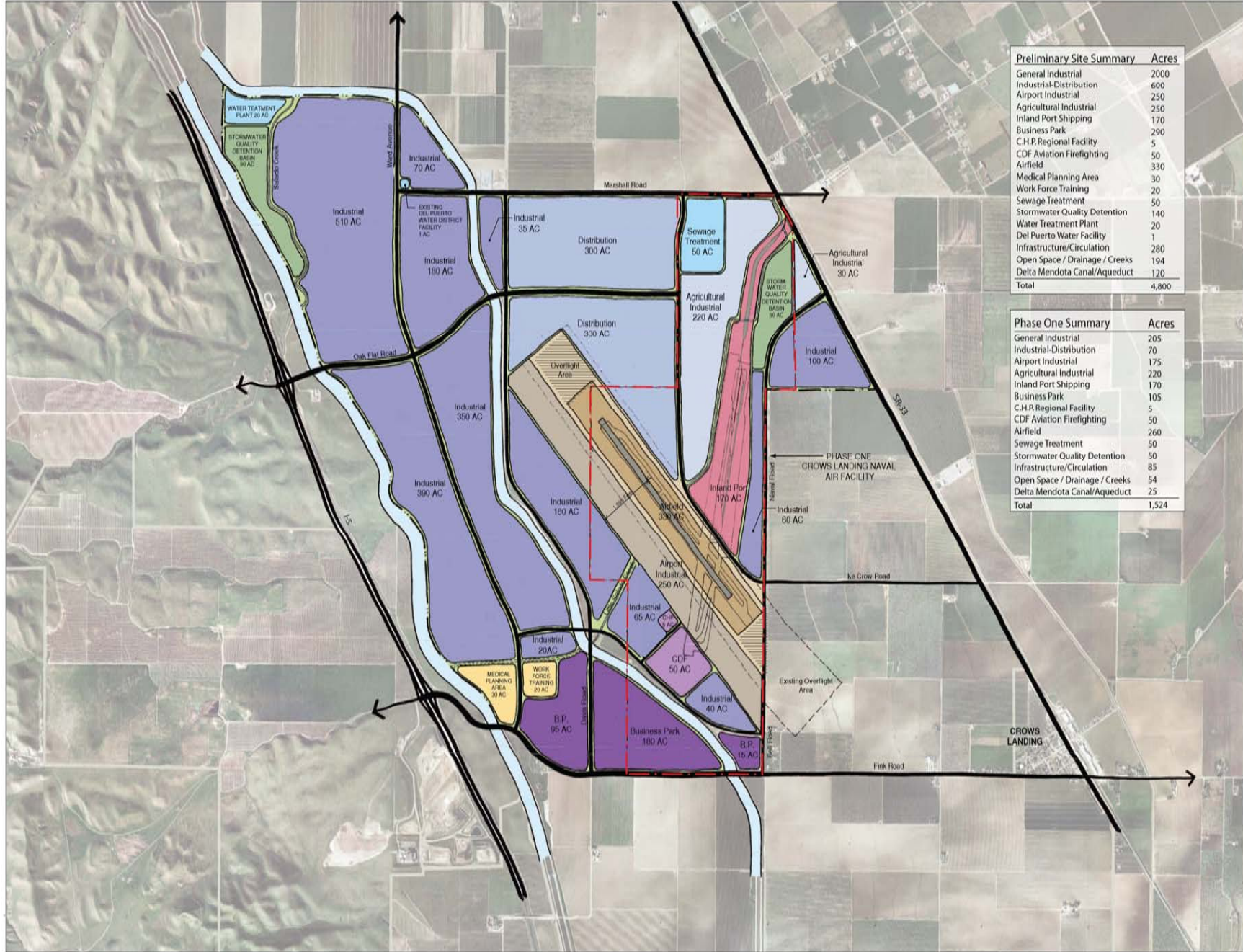
A Significant History

- 1943: Original Commission – US NAVY
- 1991: Air Cargo Study - Kreines Report
- 1994: NASA takes ownership - part of BRAC closure process – Moffett Field
- 1998: I-5 Corridor Study – EDAW Report
- 1999: Public Law 106-82 ordered conveyance
- 2004: Transfer of 1,354 acres
- 2006: Redevelopment planning/GA reuse begins
- 2006: RDA planning suspended pending private sector interest
- 2007: RFP/Exclusive Negotiation
- 2008 MOU/EIR Process start up

An aerial photograph of a landscape, possibly a coastal or agricultural area, with a large white 'X' overlaid on it. The 'X' is formed by two intersecting lines that appear to be roads or paths. The background shows various shades of brown and green, suggesting fields or terrain. The overall image has a slightly faded, high-angle perspective.

“It is possible that the Crows Landing site – connected by Rail to the Port of Oakland – could become an engine of Economic Development for the region.”

**Global Insight Report: Final Review of Current Analysis
conclusion. page 9
March 21, 2008**



Preliminary Site Summary	Acres
General Industrial	2000
Industrial-Distribution	600
Airport Industrial	250
Agricultural Industrial	250
Inland Port Shipping	170
Business Park	290
C.H.P. Regional Facility	5
CDF Aviation Firefighting	50
Airfield	330
Medical Planning Area	30
Work Force Training	20
Sewage Treatment	50
Stormwater Quality Detention	140
Water Treatment Plant	20
Del Puerto Water Facility	1
Infrastructure/Circulation	280
Open Space / Drainage / Creeks	194
Delta Mendota Canal/Aqueduct	120
Total	4,800

Phase One Summary	Acres
General Industrial	205
Industrial-Distribution	70
Airport Industrial	175
Agricultural Industrial	220
Inland Port Shipping	170
Business Park	105
C.H.P. Regional Facility	5
CDF Aviation Firefighting	50
Airfield	260
Sewage Treatment	50
Stormwater Quality Detention	50
Infrastructure/Circulation	85
Open Space / Drainage / Creeks	54
Delta Mendota Canal/Aqueduct	25
Total	1,524

West Park Conceptual Land Use Plan
Stanislaus County, CA